



| | PD2601 | Units |
|-----------------------|--------|---------------------------------|
| AC Operating Voltage | 260 | V_{RMS} |
| Load Current | 1 | A |
| On-State Voltage Drop | 1.2 | V_{RMS} ($A_T I_L = 1A$) |

Features

- Load Current up to 1A
- Blocking Voltage to 600V
- 5mA Sensitivity
- Zero-Crossing Detection
- DC Control, AC Output
- Optically Isolated
- TTL and CMOS Compatible
- Low EMI and RFI Generation
- High Noise Immunity
- VDE compatible
- Machine Insertable, Wave Solderable

Applications

- Programmable Control
- Process Control
- Power Control Panels
- Remote Switching
- Gas Pump Electronics
- Contractors
- Large Relays
- Solenoids
- Motors
- Heaters

Description

The PD2601 is an AC Solid State Switch using optical coupling with dual power SCR outputs to produce an alternative to optocoupler and Triac circuits. The PD2601 switches are robust enough to provide a blocking voltage of up to 600V and max surge current rating of 20A. In addition, tightly controlled zero cross circuitry ensures switching of AC loads without the generation of transients. The input and output circuits are optically coupled to provide 3750V of isolation and noise immunity between control and load circuits. As a result the PD2601 is well suited for industrial environments where electromagnetic interference would disrupt the operation of electromechanical relays.

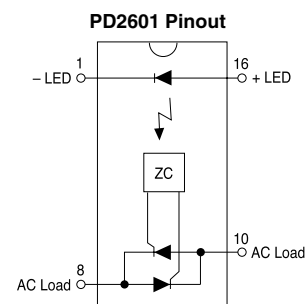
Approvals

- UL recognized file #: E69938
- CSA certified file #: LR 43639-8

Ordering Information

| Part # | Description |
|--------|----------------------|
| PD2601 | 16 Pin DIP (25/Tube) |

Pin Configuration



Absolute Maximum Ratings (@ 25° C)

| Parameter | Min | Typ | Max | Units |
|--|------|-----|-------------------|------------------|
| Input Power Dissipation | - | - | 150 ¹ | mW |
| Input Control Current | - | - | 50 | mA |
| Peak (10ms) | - | - | 1 | A |
| Reverse Input Voltage | - | - | 5 | V |
| Total Package Dissipation PD | - | - | 1600 ² | mW |
| Isolation Voltage Input to Output | 3750 | - | - | V _{RMS} |
| Operational Temperature | -40 | - | +85 | °C |
| Storage Temperature | -40 | - | +125 | °C |
| Soldering Temperature | | | | |
| DIP Package | - | - | +260 | °C |
| Surface Mount Package (10 Seconds Max.) | - | - | +220 | °C |

¹ Derate Linearly 1.33 mW/°C

² Derate Linearly 16.6 mW/°C

Absolute Maximum Ratings are stress ratings. Stresses in excess of these ratings can cause permanent damage to the device. Functional operation of the device at these or any other conditions beyond those indicated in the operational sections of this data sheet is not implied. Exposure of the device to the absolute maximum ratings for an extended period may degrade the device and effect its reliability.

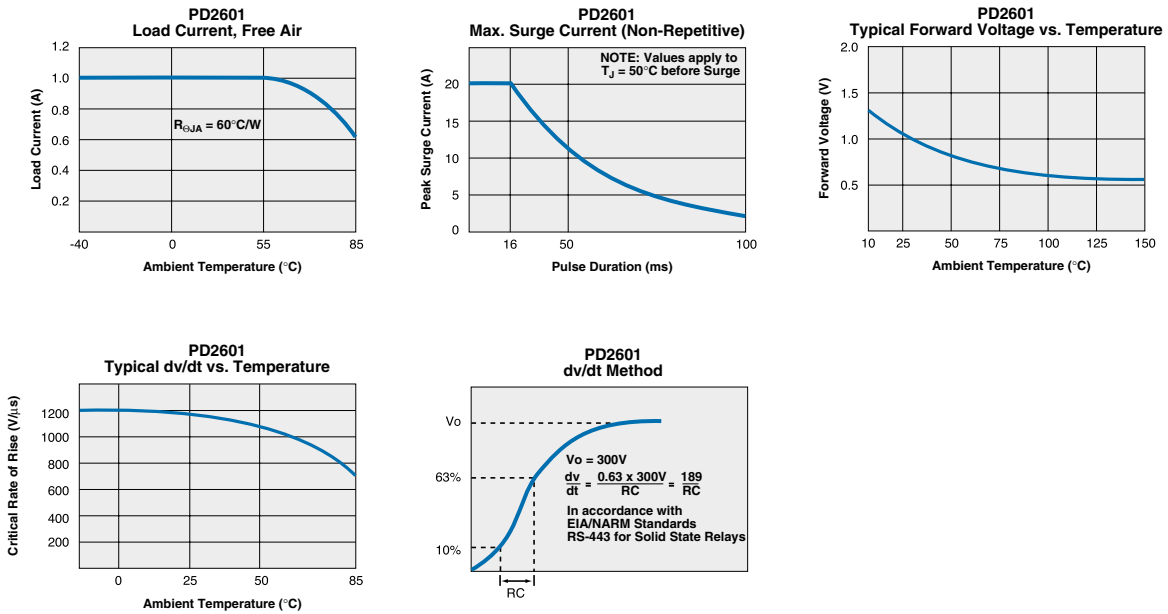
Electrical Characteristics

| Parameters | Conditions | Symbol | Min | Typ | Max | Units |
|--|----------------------------|-------------------|-------|------|-----|------------------|
| Output Characteristics @ 25°C | | | | | | |
| Peak Blocking Voltage | - | V _{DRM} | - | - | 600 | V |
| Load Current (Continuous) | V _L =120-240VAC | I _L | 0.005 | - | 1 | A |
| Off State Leakage Current | V _{DRM} | I _{LEAK} | - | - | 1 | mA |
| On-State Voltage Drop | I _L =1A | | - | - | 1.2 | V _{RMS} |
| Critical Rate of Rise | dv/dt | | 1000 | 1200 | - | V/μS |
| Switching Speeds | | | | | | |
| Turn-on | I _F =5 mA | T _{ON} | - | - | 0.5 | Cycles |
| Turn-off | I _F =5 mA | T _{OFF} | - | - | 0.5 | Cycles |
| Zero-Cross Turn-On Voltage | 1st half cycle | | - | 2 | 5 | V |
| | Sub. half cycle | | - | - | 1 | V |
| Operating Frequency ¹ | - | | 20 | - | 500 | Hz |
| Load Power Factor for Guaranteed Turn-On ² | - | PF | 0.25 | - | - | - |
| Capacitance Input to Output | | | - | 3 | - | pF |
| Input Characteristics @ 25°C | | | | | | |
| Input Control Current | | | | | | |
| For Normal Environment | - | I _F | 5 | - | 50 | mA |
| For High Noise Environment | - | I _F | 10 | - | 100 | mA |
| Input Voltage Drop | I _F =5mA | V _F | 0.9 | 1.2 | 1.4 | V |
| Input Drop-out Voltage | - | | 0.8 | - | - | V |
| Reverse Input Current | V _R =5V | I _R | - | - | 10 | uA |
| Common Characteristics @ 25°C | | | | | | |
| Input to Output Capacitance | - | C _{I/O} | - | - | 3 | V _{RMS} |
| Input to Output Isolation | - | V _{I/O} | 3750 | - | - | V _{RMS} |

¹ Zero cross 1st 1/2 cycle @ <100Hz

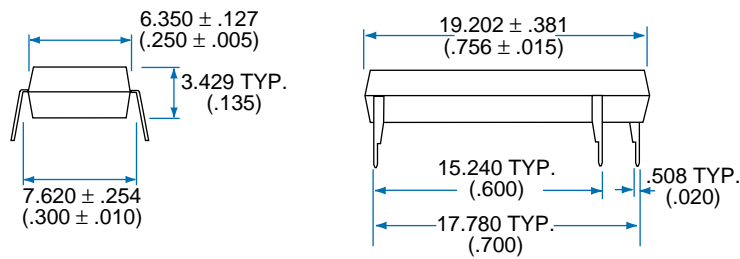
² Snubber circuits may be required at low power factors.

PERFORMANCE DATA*



Mechanical Dimensions

16 Pin DIP



The Performance data shown in the graphs above is typical of device performance. For guaranteed parameters not indicated in the written specifications, please contact our application department.



CLARE

For additional information please visit our website at: www.clare.com

Clare, Inc. makes no representations or warranties with respect to the accuracy or completeness of the contents of this publication and reserves the right to make changes to specifications and product descriptions at any time without notice. Neither circuit patent licenses nor indemnity are expressed or implied. Except as set forth in Clare's Standard Terms and Conditions of Sale, Clare, Inc. assumes no liability whatsoever, and disclaims any express or implied warranty, relating to its products including, but not limited to, the implied warranty of merchantability, fitness for a particular purpose, or infringement of any intellectual property right.

The products described in this document are not designed, intended, authorized or warranted for use as components in systems intended for surgical implant into the body, or in other applications intended to support or sustain life, or where malfunction of Clare's product may result in direct physical harm, injury, or death to a person or severe property or environmental damage. Clare, Inc. reserves the right to discontinue or make changes to its products at any time without notice.

Specification: DS-PD2601-R9.0
©Copyright 2002, Clare, Inc.
All rights reserved. Printed in USA.
6/25/02